

Proposed MBTA Parking Garage

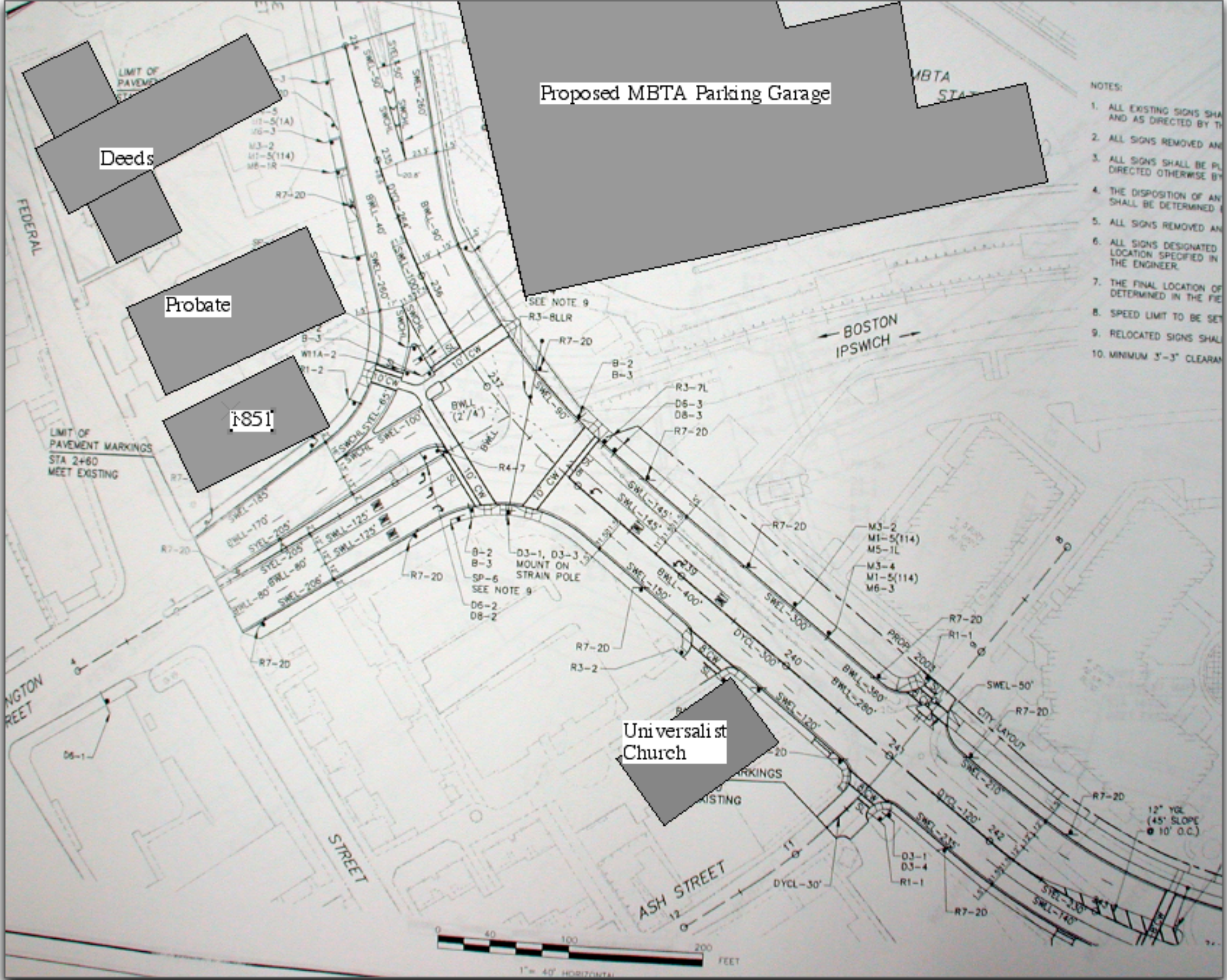
Deeds

Probate

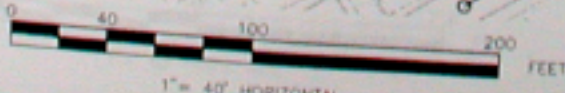
1851

Uni versali st Church

- NOTES:
1. ALL EXISTING SIGNS SHALL BE REMOVED AND AS DIRECTED BY THE ENGINEER.
  2. ALL SIGNS REMOVED AND RELOCATED SHALL BE RELOCATED AS DIRECTED OTHERWISE BY THE ENGINEER.
  3. ALL SIGNS SHALL BE PLACED AS DIRECTED OTHERWISE BY THE ENGINEER.
  4. THE DISPOSITION OF ANY SIGN SHALL BE DETERMINED BY THE ENGINEER.
  5. ALL SIGNS REMOVED AND RELOCATED SHALL BE RELOCATED AS DIRECTED OTHERWISE BY THE ENGINEER.
  6. ALL SIGNS DESIGNATED BY THE ENGINEER SHALL BE RELOCATED AS SPECIFIED IN THE ENGINEER'S NOTES.
  7. THE FINAL LOCATION OF ANY SIGN SHALL BE DETERMINED BY THE ENGINEER.
  8. SPEED LIMIT TO BE SET AS DIRECTED BY THE ENGINEER.
  9. RELOCATED SIGNS SHALL BE RELOCATED AS DIRECTED OTHERWISE BY THE ENGINEER.
  10. MINIMUM 3'-3" CLEARANCE SHALL BE MAINTAINED.



BOSTON  
IPSWICH



1" = 40' HORIZONTAL